

ebiquo

ebision

REMOTE VISUALISATION AND COMMUNICATION MODULE



DISRUPTIVE TECHNOLOGY

COLOUR DISPLAY WITH ALL PUMP INFORMATION

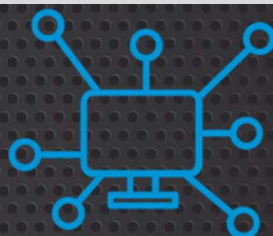
COMMUNICATION VIA SMS / MQTT WITH CLOUD

AMAZING FEATURES

REDUCED SIZE

ROBUST, EFFECTIVE.

REMOTE VIEWING AND COMMUNICATION
FIRE PUMP ROOMS



MAIN FEATURES

Provides details of fire pumps without entering the pump room. Sends information via SMS, assigned relays...

Ebision receives complete and detailed information on the total number of pumps in a pump room and makes it available in a comprehensible form on its display for both technical and non-specialist users.

Ebision can also send SMS messages to up to 5 designated phones, forward information to relays and send data via MQTT to the cloud.



TECHNICAL CHARACTERISTICS

Technical standards and rules

#0093D3

Compliance with technical rules and standards	Low Voltage Equipment Directive: 2014/35/EU
	Electromagnetic Compatibility Directive: 2014/30/EU
	IEC 61000-6-2 : Immunity in industrial environments
	IEC 61000-4-2 : Electrostatic discharge.
	IEC61000-4-3 Radio frequency electromagnetic fields.
	IEC 61000-4-4 : Electrical fast burst transients
	IEC 61000-4-5 : Surges.
	IEC 61000-4-6 Radio-frequency induced currents
	IEC 61000-4-8 Magnetic fields at industrial frequency
	IEC 61000-4-11 immunity to voltage dips,
	IEC 61000-6-3 Emission for equipment in residential environments.
	EN 301 489-7 EMC for radio equipment and services
IEC 61000-3-2 EMC for Harmonic Current Emissions	

Electrical characteristics and batteries

Rated supply voltage	110 - 240 VAC 50-60 Hz
Mains power consumption	< 7 W
Nominal Battery Voltage	2 x 3.2 VDC 0.6 Ah cells
Phase-to-earth insulation voltage	2000 VAC
Protection against electric shock by means of plastic enclosure	
Battery consumption (without mains supply):	0.35 ADC
Operating autonomy without mains power supply	15 min / 24 h with external battery

Construction features

External envelope	Degree of protection against access to hazardous parts IP20
	Degree of impact protection: IK06 Except Display
	Outer casing: ABS UL 94 V0: flame-resistant and self-extinguishing.
Display	TFT colour 4.3" 480x272 px
Horn	75dB measured at 1m
Wiring	Halogen-free Fire resistance: RZ1 according to EN50200 (830° for 90min)
Working temperatures	Recommended: -10°C to 60°C
Relative humidity (non-condensing)	Functional: 20 to 95%.
Refrigeration:	Natural convection
Maximum altitude:	2000 m
Environment	EMC-1

Indicator lights

	Ebision mains powered
	Communication between Ebision and pump control panels
	Maintenance surveillance
	Alarm monitoring

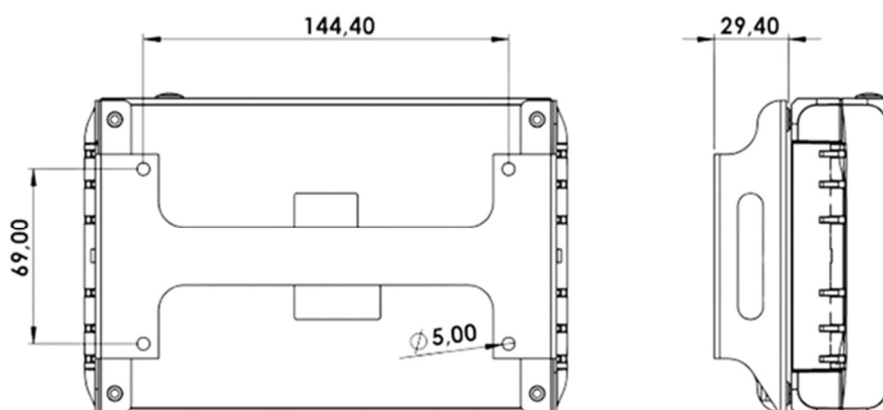
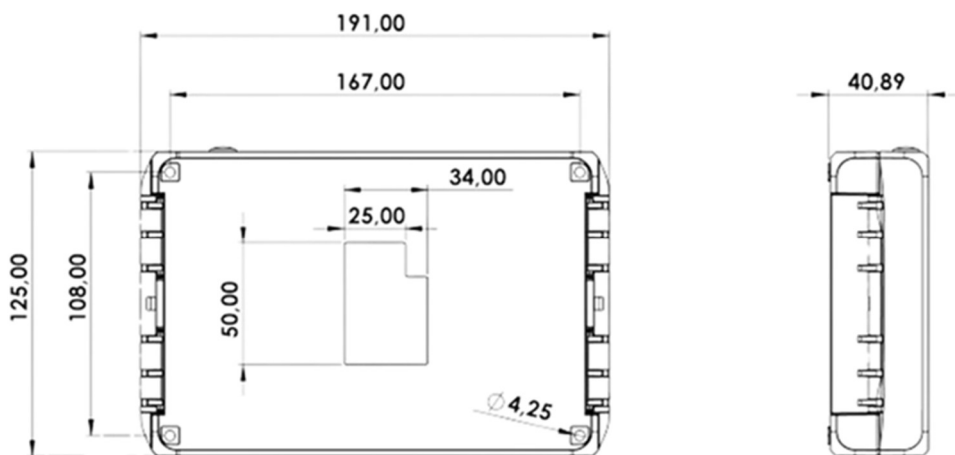
Communications

Up to 5 mobile telephone	SMS messages
Ethernet: Modbus / TCP-IP protocol	Optional module SCOM903 not included as standard
RS485 Modbus / RTU protocol	SCOM901 optional module not included as standard
Potential-free contacts	3 potential-free double relays: 250 VAC - 0.3A

Languages

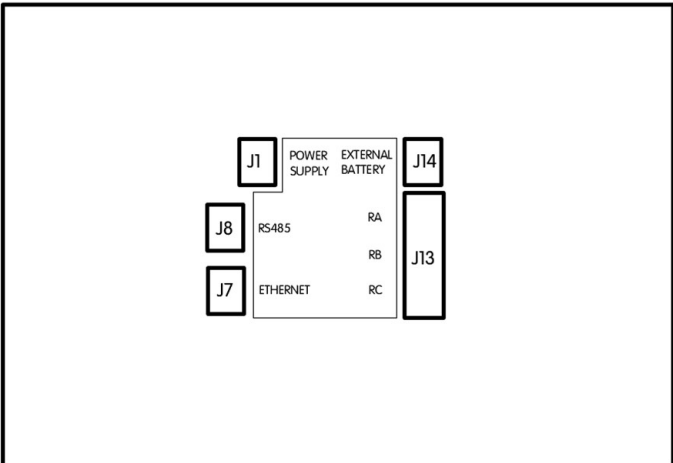
ESPAÑOL / ENGLISH / FRANÇAIS / ITALIANO / PORTUGUES / DEUTSCH / SVENSKA / NEDERLANDSE / NEDERLANDSE

DIMENSIONS AND ANCHORAGES

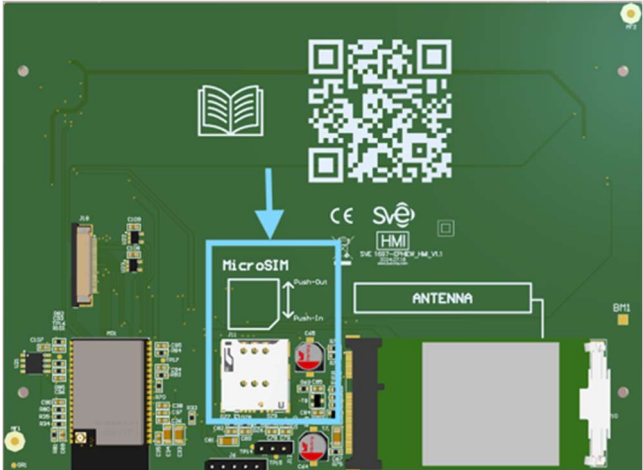


WIRING DIAGRAM

Cables

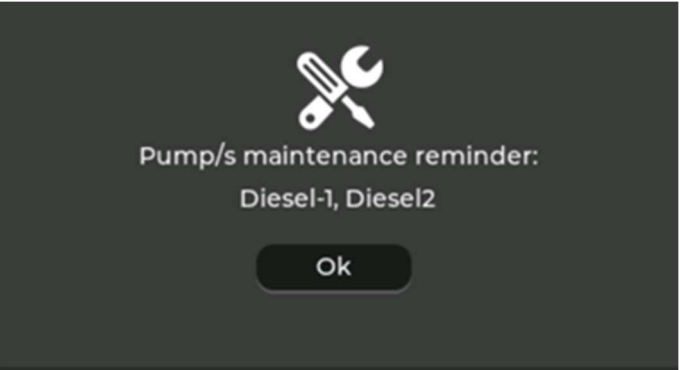
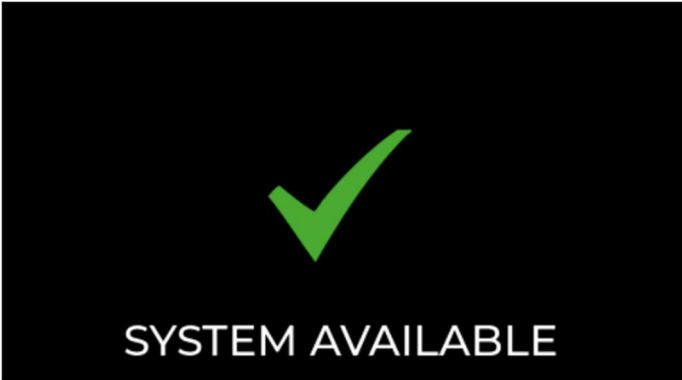


SIM Card



DISPLAYS

Main screens



Monitoring screens

Pump selection

EPHIEW Monday 2024.10.30 14:18:05

- DIESEL-1**: AUTO STOPPED, NO ALARMS
- ELECTRIC-1**: MAN RUNNING, ALARMS
- JOCKEY-1**: OFF STOPPED, ALARMS
- DIESEL-2**: MAN RUNNING, NO ALARMS
- ELECTRIC-2**: OFF STOPPED, ALARMS

Details of each pump

Serial N: 240200003 DIESEL-1 25.2°C

236 Vac 50.0 Hz Mode: **AUTO** Demand: **Pressure switch 1** RS485

0.3A 0.0A 85% 0 rpm

13.6V 13.5V Stopped 16h 41m EQU: 318h

AL62-FAILED TO START ENGINE

Serial N: 241000001 ELECTRIC-1 25.3°C

L1 > L2 > L3 50.0 Hz P: 0 kW PF: 0 Stopped 1h 14m

400 Vac 400 Vac 400 Vac 0 Aac 0 Aac 0 Aac

Mode: **AUTO** Demand: **Pressure switch 1** ETHERNET

AL62-FAILED TO START ENGINE

Serial N: 241100001 JOCKEY-1 25.1°C

L1 > L2 > L3 50 Hz P: 0 kW PF: 0 Stopped 1h 15m

400 Vac 400 Vac 0 Aac 12

Mode: **AUTO** Demand: **Pressure switch 1** ETHERNET

NO ALARMS

SYSTEM PARAMETERS

SMS CONFIGURATION

Available information

Mode of operation	Detail of total pump alarms
System pressure	Battery voltage and charger current
Mains voltage	Current date and time (accuracy s)
Pump start/stop states	Room temperature
Mechanical data diesel engine	Accumulated pump running hours and minutes
Electrical data electric motor	Transducer and pump demand pressure switch
Total records stored in the pump panels	Total statistics stored in the pump panels



Albert Einstein 36-B
Parque Tecnológico Alava
01510 Vitoria-Gasteiz
ESPAÑA / SPAIN
www.svecorp.com

